



## Bromell's Road, Clapham Old Town, SW4

2 bedroom flat for sale

**£450,000**

Leasehold

### Property Details

An exciting two double bedroom apartment, occupying the first floor of an imposing Victorian mansion block on the highly sought-after Bromell's Road, in the heart of Clapham Old Town. With generous proportions and high ceilings, this property offers the opportunity to create a dream home, just moments from Clapham Common and the vibrant amenities of the Old Town. The spacious reception sits to the front, illuminated by large South-facing sash bay windows. A graceful room with soaring corniced ceilings, it provides ample space for entertaining, dining, or simply relaxing. To the rear, the separate kitchen-diner enjoys a leafy outlook, with dual-aspect windows and plentiful storage across three distinct sets of cabinetry. The versatile layout allows space for a dining table or island, offering an appealing social hub. The bedrooms are positioned separately for privacy. The principal benefits from fitted wardrobes, while the second can accommodate a double bed or be repurposed to suit needs such as a home office. A centrally placed bathroom, complete with bathtub and overhead shower, completes this charming apartment.

Council tax band D

EPC rating C (76)

### Features

- Two bedrooms
- Victorian mansion building
- Charming features
- Exciting blank canvas
- Venn Street moments away, including weekend market
- Old Town and Clapham High Street both a two-minute stroll
- Clapham Common a three-minute stroll
- Northern Line a three-minute walk
- Chain-free



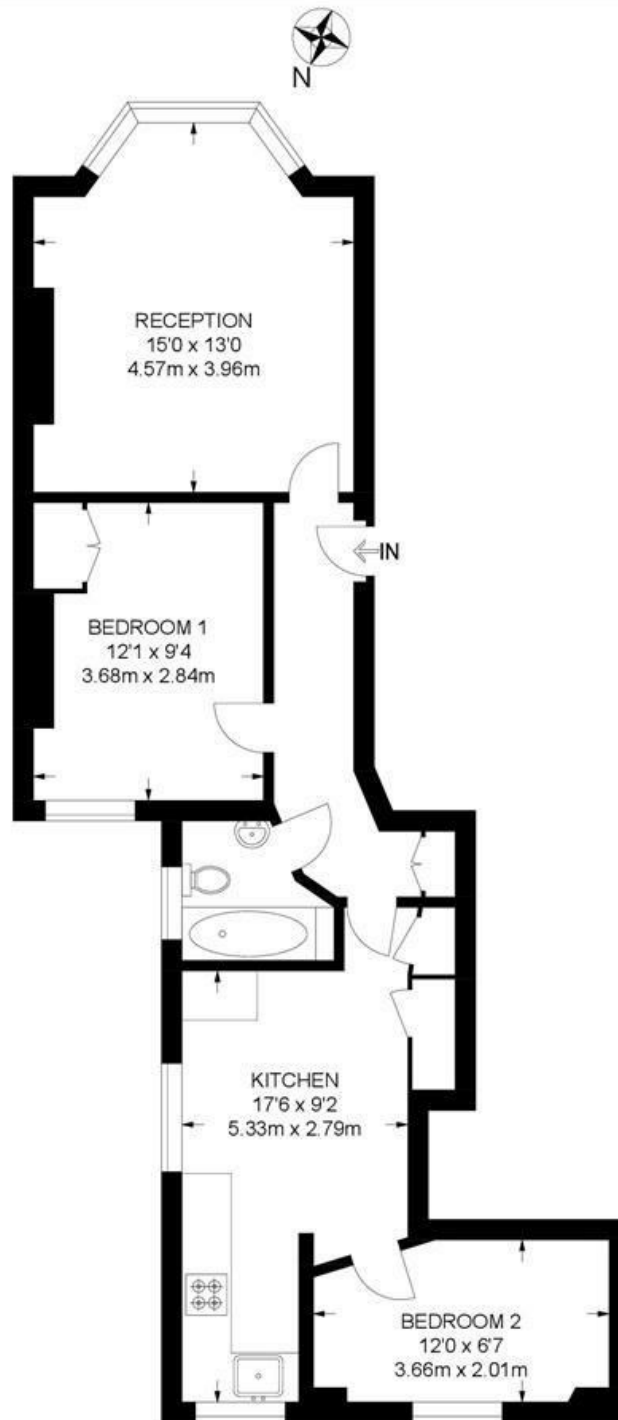


Bromell's Road, Clapham Old Town, SW4

**Bromell's Road, SW4**

**2 Bedroom Flat**

APPROXIMATE GROSS INTERNAL AREA: 635 SQ FT / 59 SQ M



FIRST FLOOR



While we try our very best, floor plans are produced as a guide only and we take no responsibility for the precise accuracy with which any property is represented.



Bromell's Road, Clapham Old Town, SW4

